

BEST PRACTICES



MORE IS BETTER

Use all DAKA® GRID Blocks provided to support and protect your equipment.

Additional DAKA® GRID Blocks can be purchased at MAGPUL.COM/GRID



MADE TO PROTECT

DAKA® GRID Blocks are engineered to absorb high impact forces and provide superior impact protection over open cell sheet foam.

DAKA® GRID Blocks are designed to be a sacrificial point of failure — this protects your gear and reduces the chance of case damage.

If a heavy impact occurs, inspect contents and blocks, and reorient or replace blocks as needed.



EQUIPMENT WIDTH

If your rifle contains accessories such as magnified optics with large turrets or side mounted optics/flashlights, in some instances it may be difficult to close the lid of the case.

Items that protrude can be repositioned on the GRID panel for better fitment.

When storing a bolt action rifle, it may be beneficial to remove the bolt before placing it on the GRID panel.



SETTLING

Closing the lid with DAKA® GRID Organizer the first time may require additional pressure.

It is highly recommended that the complete system be installed inside the case with all provided GRID Blocks without any equipment inside, and the lid closed for 24 hours to allow the system to settle.

After 24 hours, you should notice that the system will have settled, and the case will be easier to close.

MAGPUL

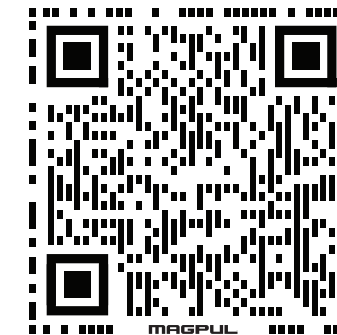
DAKA

GRID ORGANIZER INSTALLATION INSTRUCTIONS



LARGE PIECE OF GRAY FOAM IS PART OF THE SYSTEM. DO NOT DISCARD.

INSTALLATION, USE TIPS,
AND ADDITIONAL ACCESSORIES:
PLEASE VISIT MAGPUL.COM/GRID



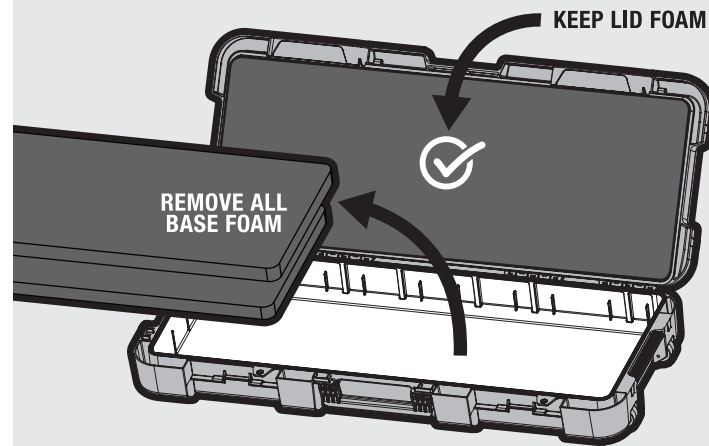
WWW.MAGPUL.COM/GRID • 1.877.4MAGPUL

STEP 1: BASE FOAM INSTALLATION

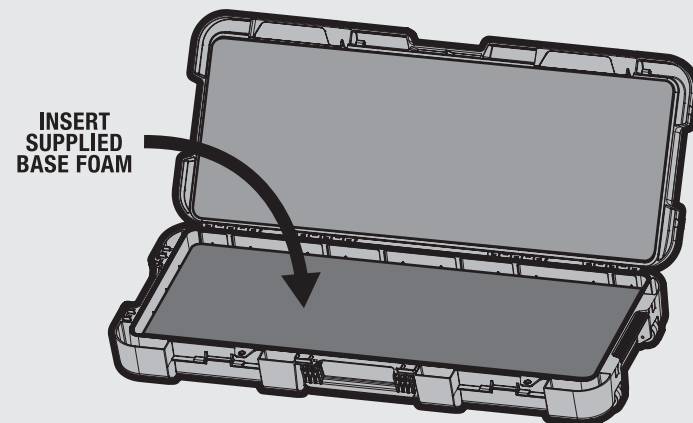
IMPORTANT:

All base foam on the **BOTTOM** must be replaced with supplied foam before **DAKA® GRID** is installed.

- A** Keep foam in case lid installed.
Remove all base foam that came with your case.



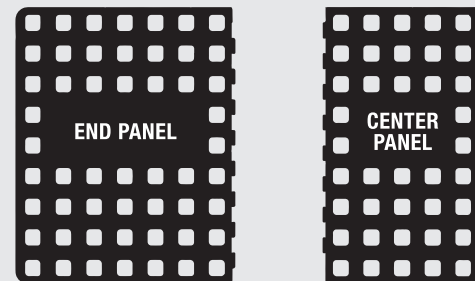
- B** Unfold foam that was included with **DAKA® GRID** Organizer and insert in base.



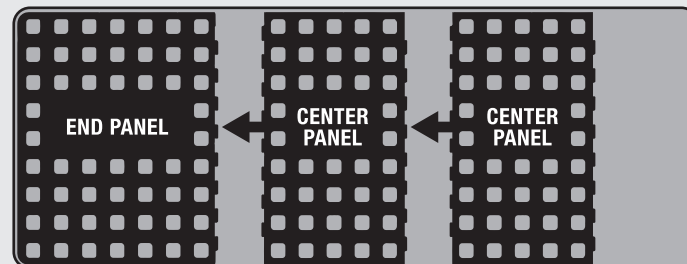
NOTE: After installing supplied foam, **GRID** base, and blocks, we recommend closing the lid and allowing the system to settle for 24 hours without any equipment inside.

STEP 2: BASE PANEL INSTALLATION

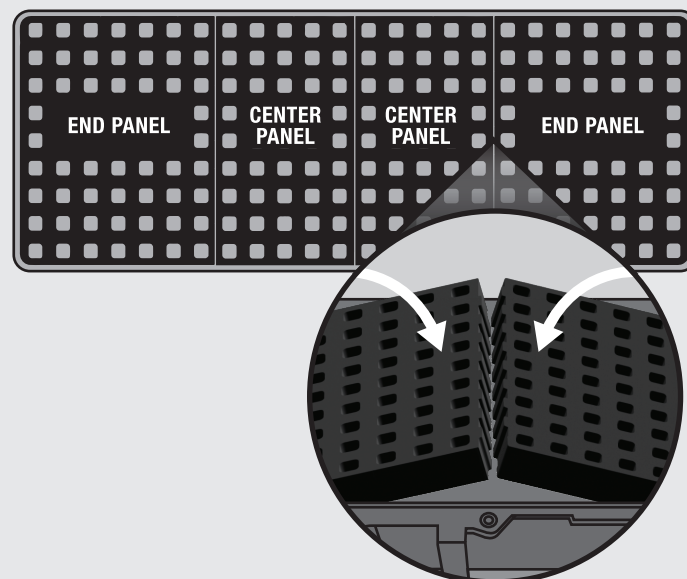
- A** Identify **END** Panels and **CENTER** panels.
END panels are larger and rounded on two corners.
Number of **CENTER** panels will vary depending on size of case.
Arrange panels with flat side facing up.



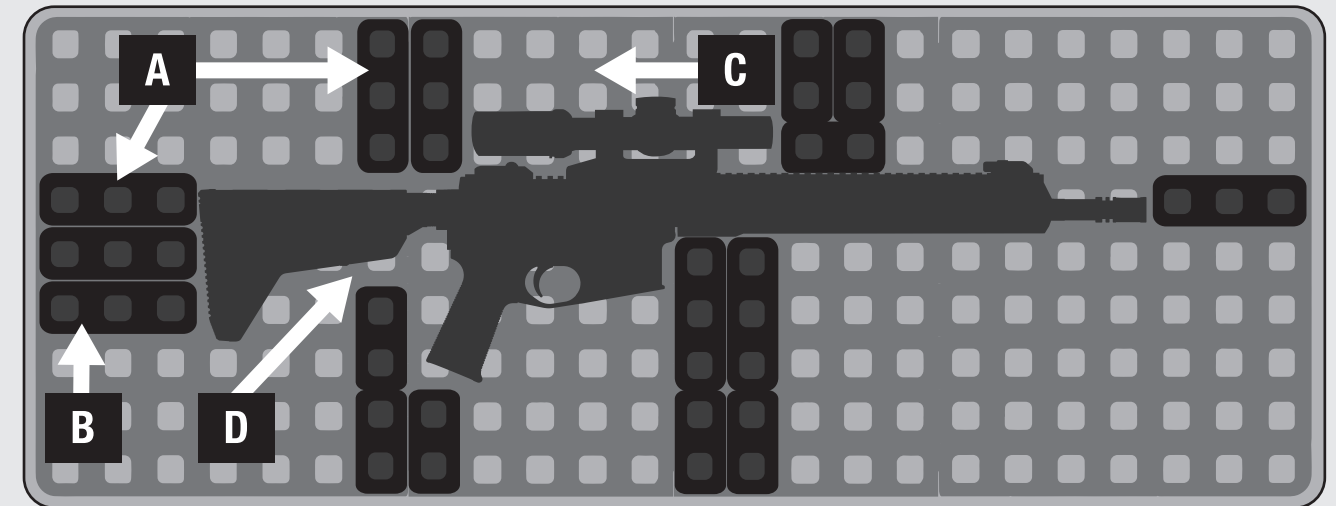
- B** Starting with **END** panel against edge of case, from left to right.
Arrange **CENTER** panels next, aligning interlocking teeth of each panel together.
Repeat until all required **CENTER** panels are inserted.



- C** Once all **CENTER** panels are in case, place **END** panel against right hand edge and angle both the last **CENTER** panel and **END** panel upwards so they form a tent.
Press down to seat panels on the foam base.

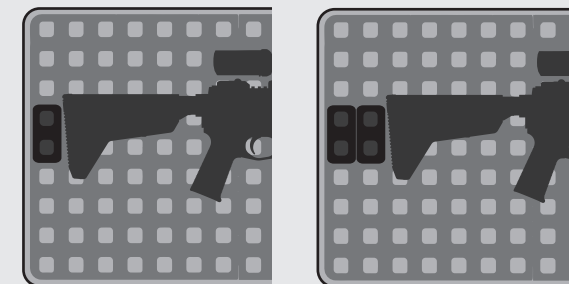


STEP 3: RECOMMENDED ARRANGEMENT

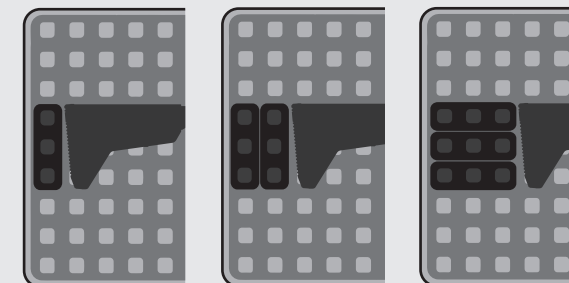


- A** Brace heavy objects against case walls.
Arrange blocks in supportive positions around the equipment, bracing the blocks against the outer edges of the case wherever possible.

- B** For items less than 7lb (3.2kg)
It is recommended to use a minimum of two block columns to brace in the top/bottom and fore/aft directions.

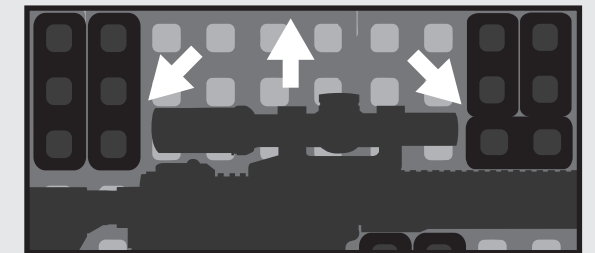


- For items more than 7lb (3.2kg)
It is suggested to use three block columns to brace in each direction.



Additional **DAKA® GRID** Blocks and accessories can be purchased at MAGPUL.COM/GRID

- C** Free float optics — For rifles with scopes and optics, arrange blocks to allow space between the optics and blocks. Do not allow optics to rest against case walls.



- D** Fitment against equipment will not always be exact — Once lid of case is closed, top foam will compress **GRID** and secure stowed items.



- E** Always place blocks between smaller and larger items.

